

26 OCTOBER 2021

INTERIOR SPACE PLANNING

26 OCTOBER 2021

PLANNING, LAYOUT AND DESIGN

26 OCTOBER 2021

NEED FOR SHELTER AND PROTECTION
INFLUENCE OUR ACTIVITIES
NURTURE OUR ASPIRATIONS
EXPRESS IDEAS THE ACCOMPANY OUR ACTIONS
AFFECT OUR OUTLOOK MOOD AND PERSONALITY

26 OCTOBER 2021

**FUNCTIONAL IMPROVEMENT
AESTHETIC ENRICHMENT
PSYCHOLOGICAL ENHANCEMENT**

QUALITY OF LIFE

26 OCTOBER 2021

WHAT DEFINES AN INTERIOR SPACE?

26 OCTOBER 2021

WHAT DEFINES AN INTERIOR SPACE?

SHELTER AND ENCLOSURE

26 OCTOBER 2021

SHELTER AND ENCLOSURE

DEFINED BY

FLOOR PLANES

26 OCTOBER 2021

SHELTER AND ENCLOSURE

DEFINED BY

WALL PLANES

26 OCTOBER 2021

SHELTER AND ENCLOSURE

DEFINED BY

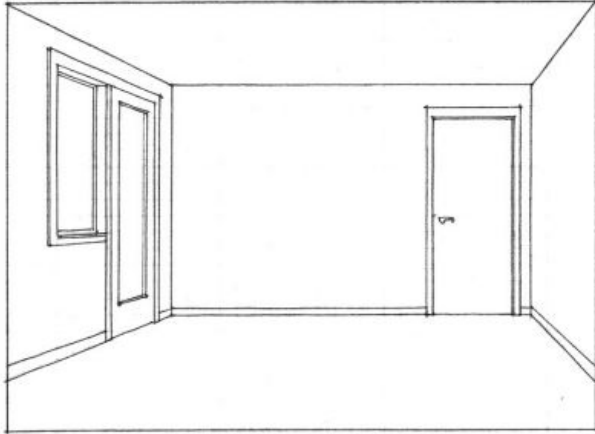
CEILING PLANES

26 OCTOBER 2021

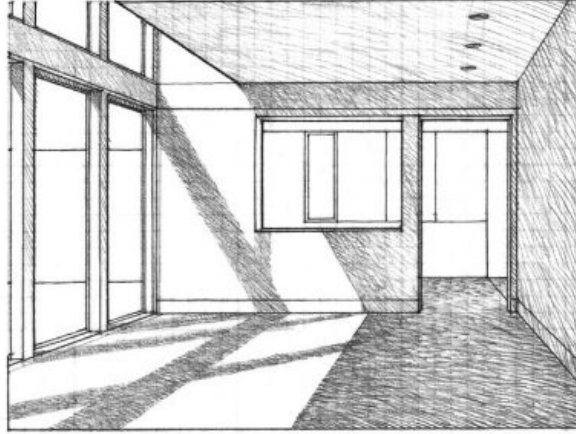
FLOOR PLANES
WALL PLANES
CEILING PLANES

FORM, CONFIGURATION & PATTERN

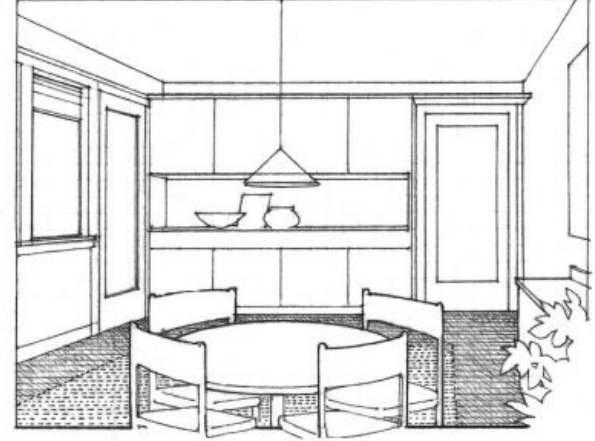
SPATIAL AND ARCHITECTURAL QUALITIES



The basic shell

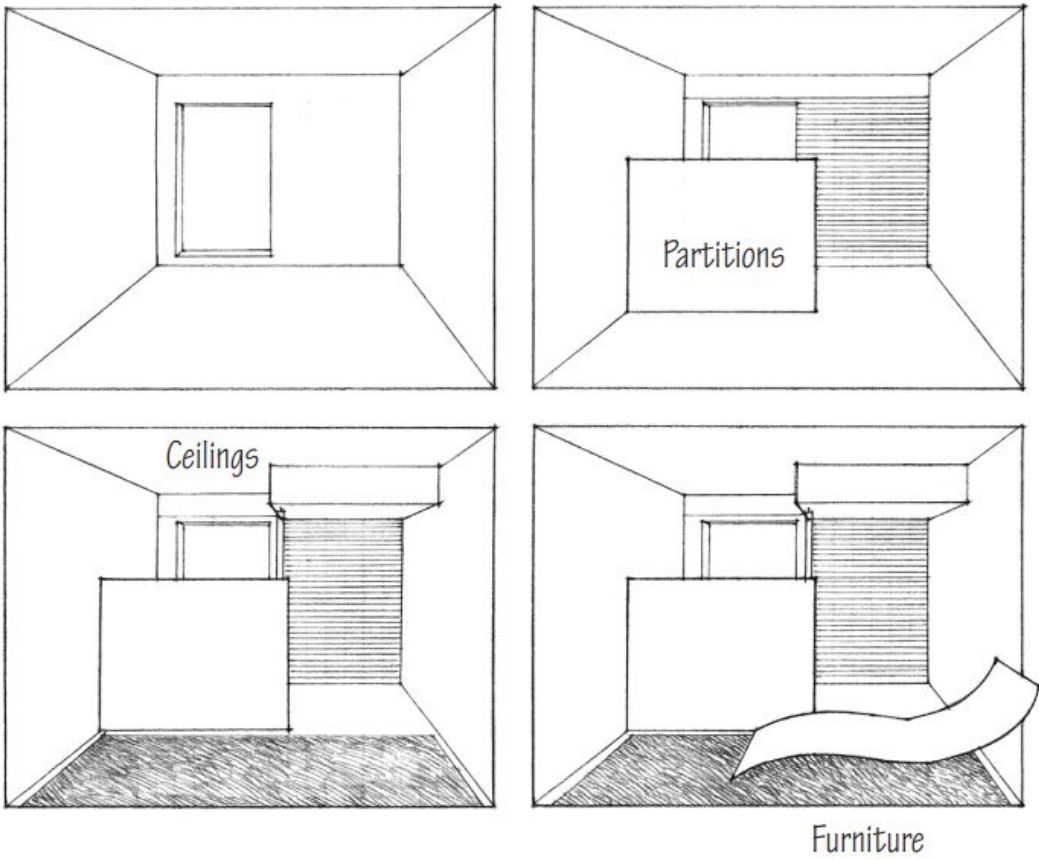


...modified architecturally

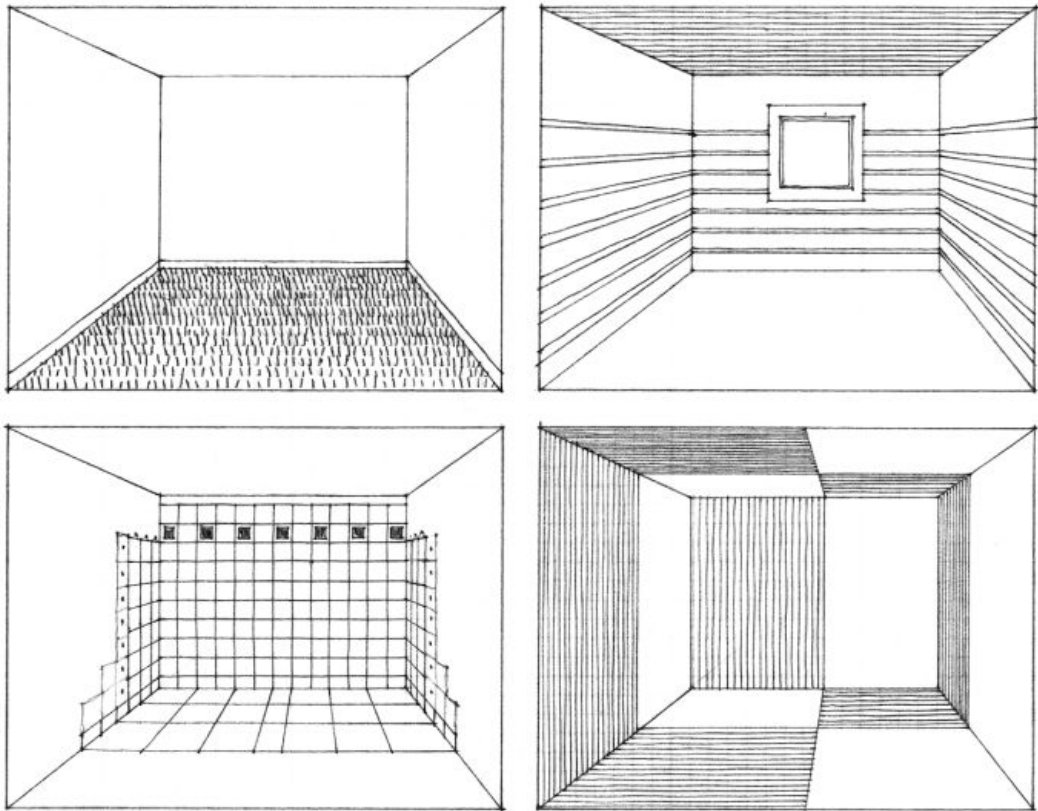


...or through interior design

INTERIOR DESIGN ILLUSTRATED - DK CHING

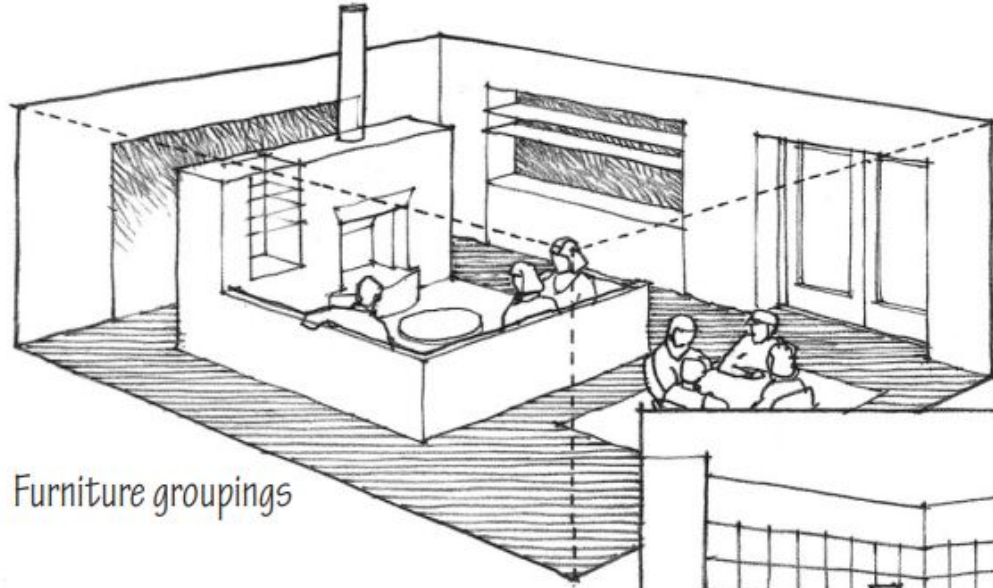


INTERIOR DESIGN ILLUSTRATED - DK CHING

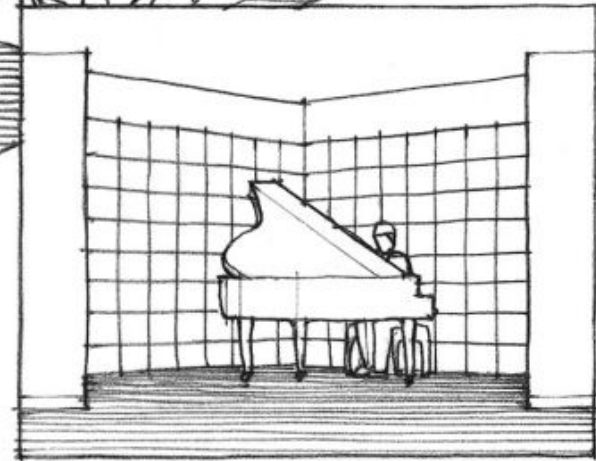


Color, texture, and pattern

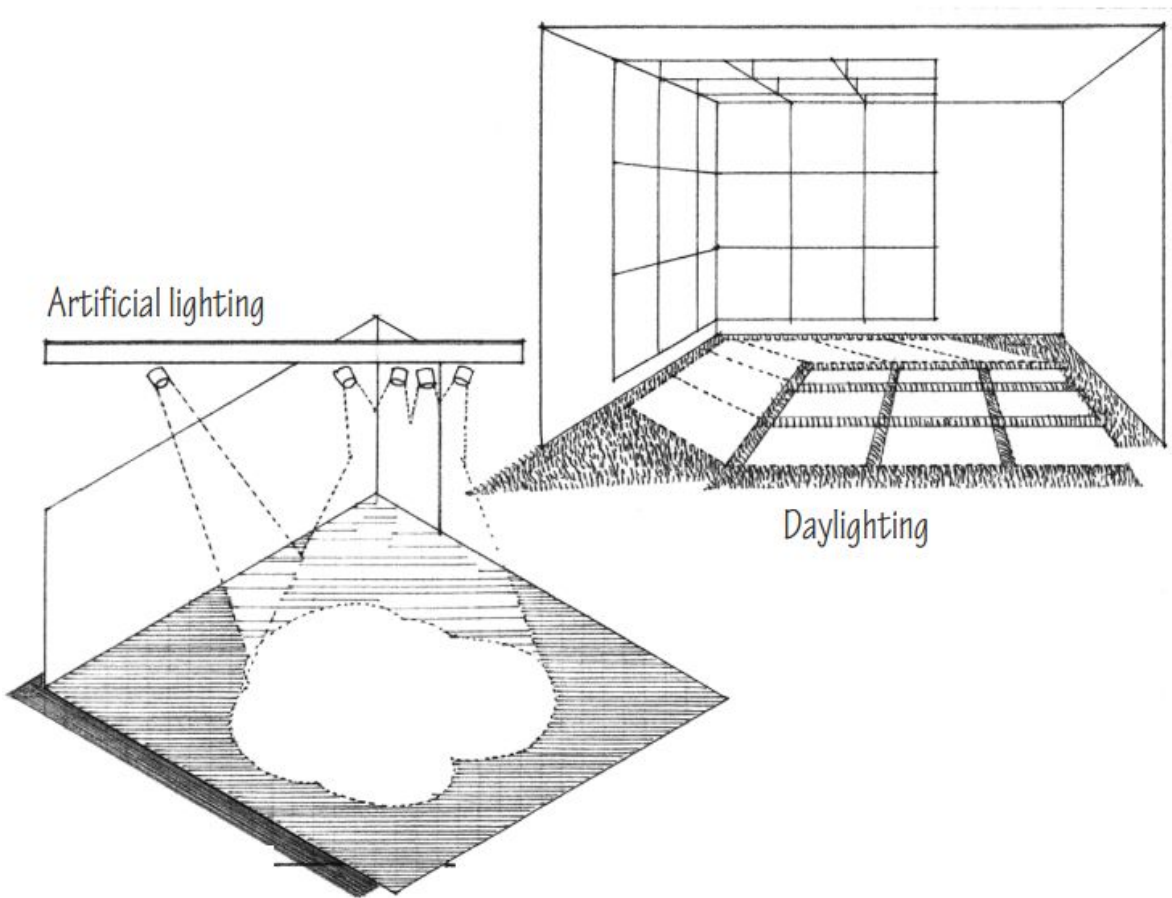
INTERIOR DESIGN ILLUSTRATED - DK CHING



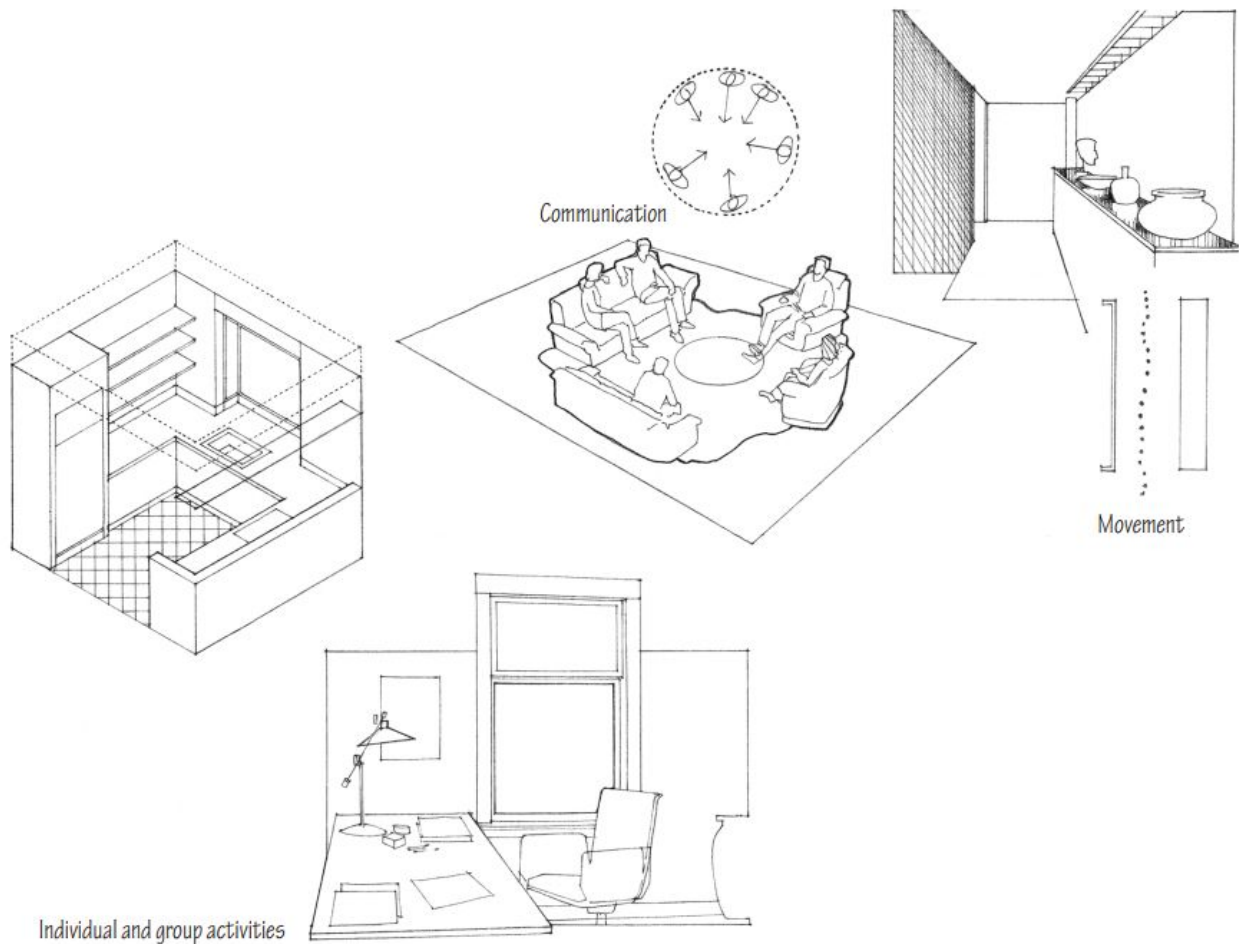
Furniture groupings



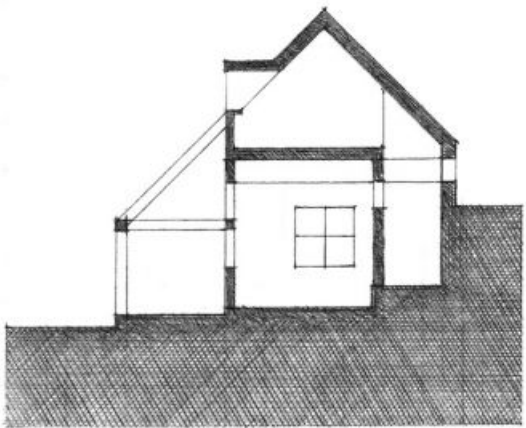
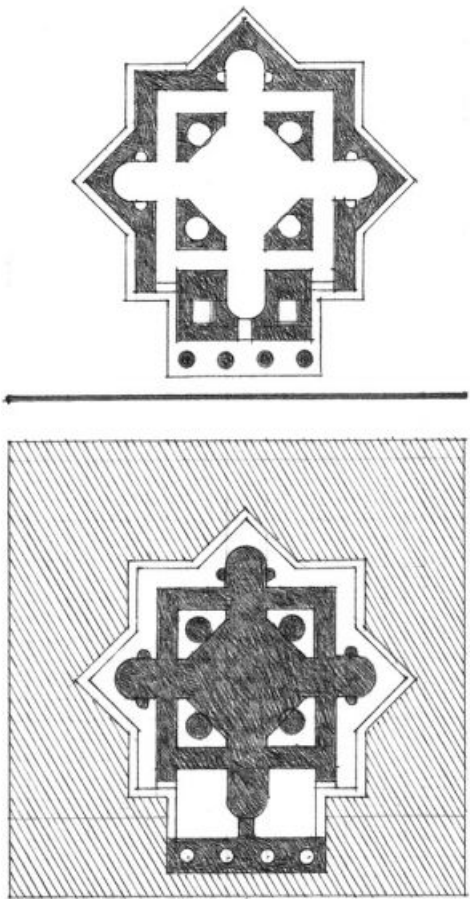
A dominant element



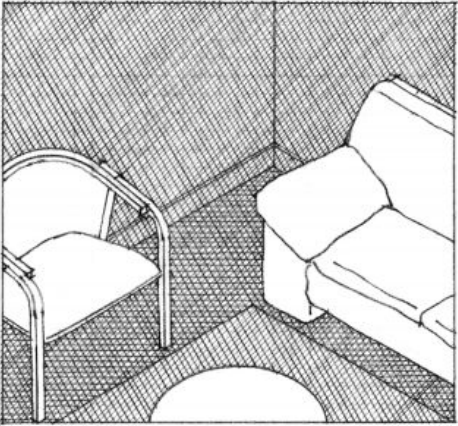
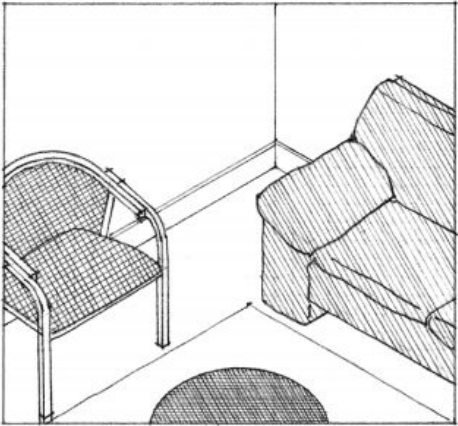
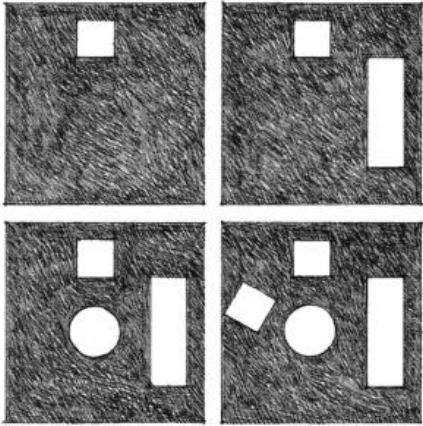
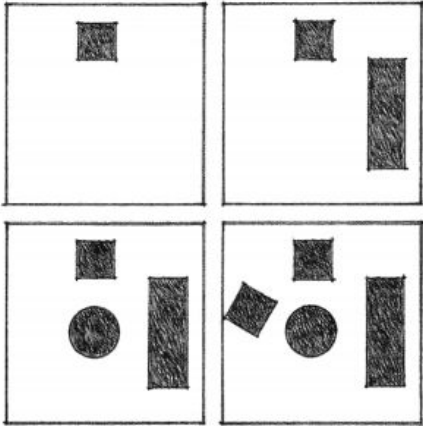
INTERIOR DESIGN ILLUSTRATED - DK CHING



26 OCTOBER 2021

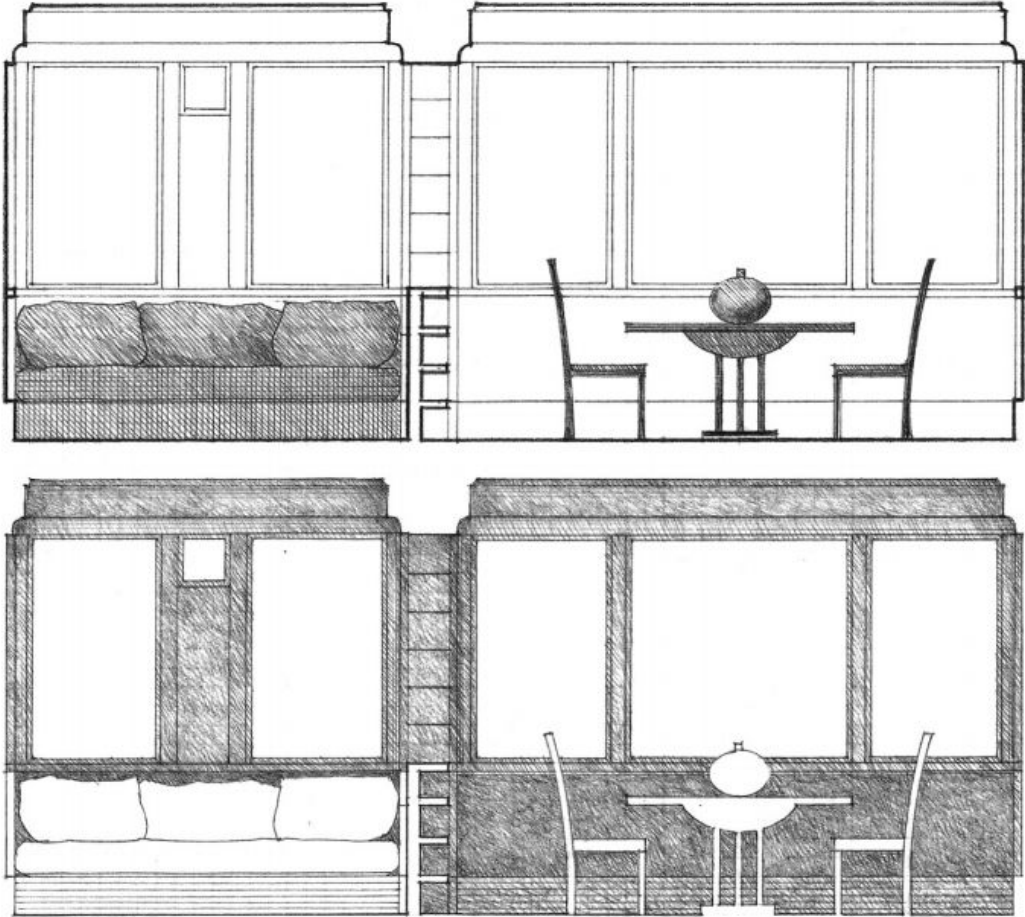


INTERIOR DESIGN ILLUSTRATED - DK CHING



INTERIOR DESIGN ILLUSTRATED - DK CHING

26 OCTOBER 2021



INTERIOR DESIGN ILLUSTRATED - DK CHING

26 OCTOBER 2021

PROGRAMMING

USER REQUIREMENTS ACTIVITY REQUIREMENTS FURNISHING REQUIREMENTS

**refer handout01*

26 OCTOBER 2021

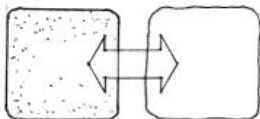
SPACE PLANNING

TSAP 21-22

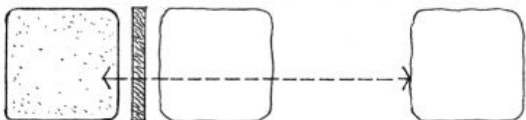
ALDS03

SPACE ANALYSIS DESIRED QUALITIES DESIRED RELATIONSHIPS

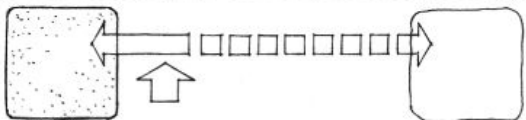
**refer handout02*



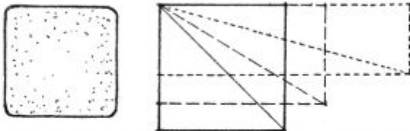
Which activities should be closely related?



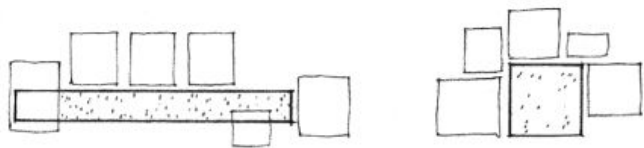
Which activities can be isolated by enclosure or distance?



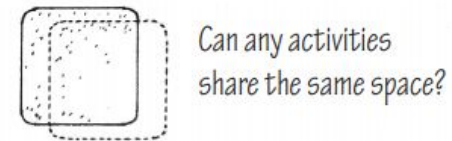
What degree of accessibility is required?



Are there specific proportional requirements?

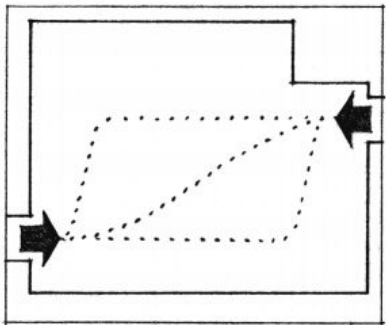


Do activity relationships suggest a spatial pattern?

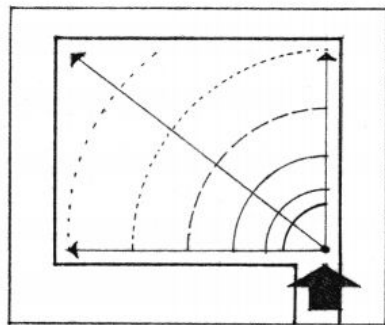


Can any activities share the same space?

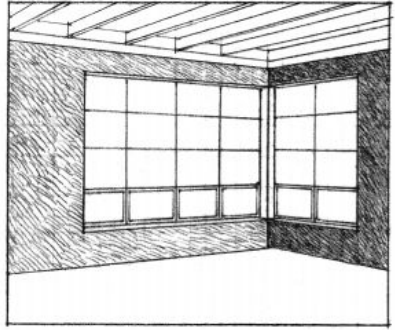
INTERIOR DESIGN ILLUSTRATED - DK CHING



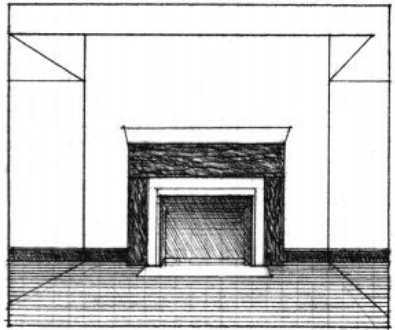
Possible paths of movement



Accessibility of zones

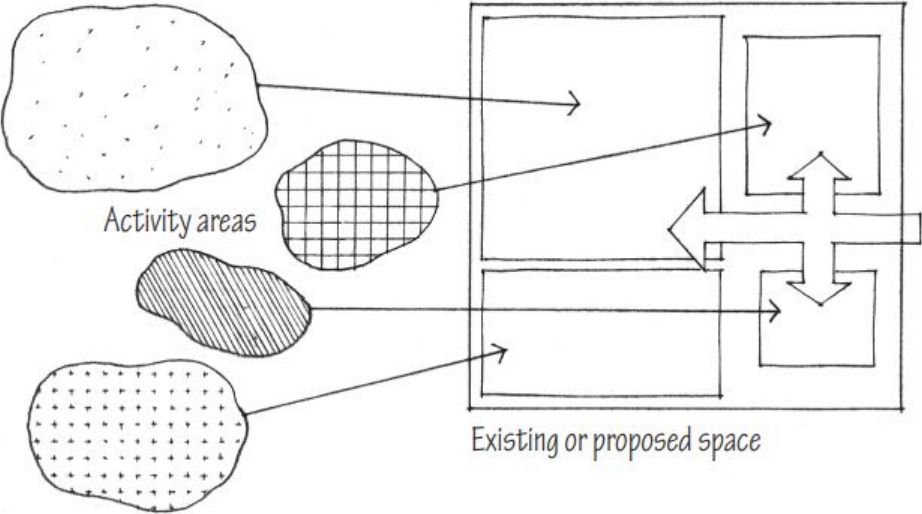
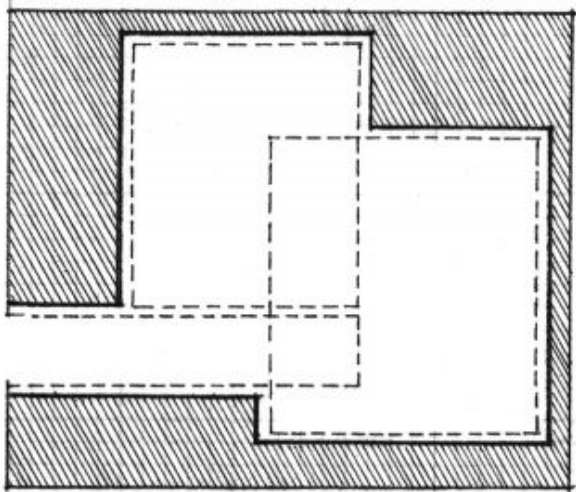


External outlook



Internal focus

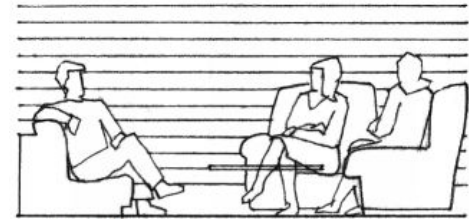
INTERIOR DESIGN ILLUSTRATED - DK CHING



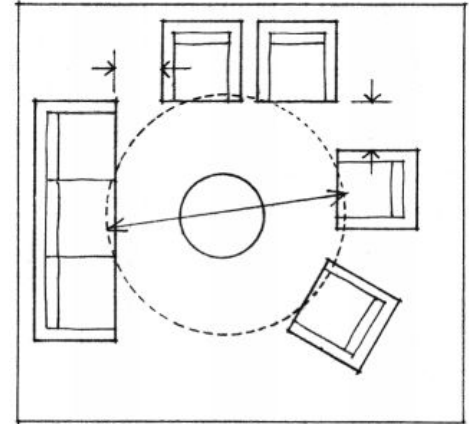
INTERIOR DESIGN ILLUSTRATED - DK CHING

Function

- Activity-specific grouping of furniture
- Workable dimensions and clearances
- Appropriate social distances
- Suitable visual and acoustical privacy
- Adequate flexibility or adaptability
- Appropriate lighting and other building services



Functional groupings

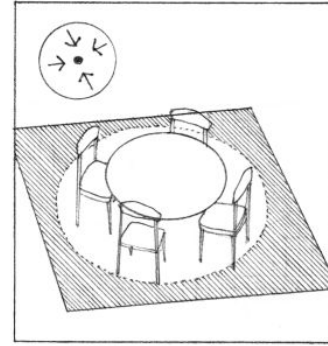


Dimensions and distances

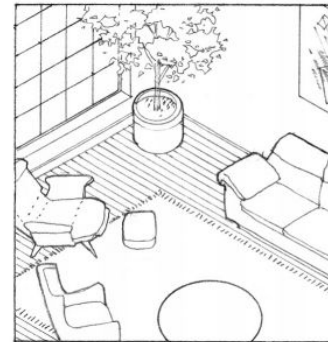
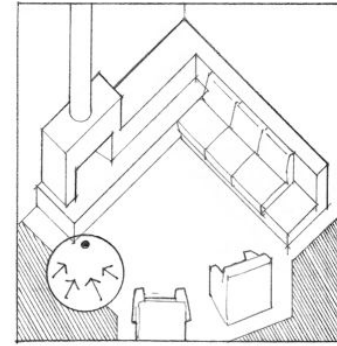
INTERIOR DESIGN ILLUSTRATED - DK CHING

Aesthetics

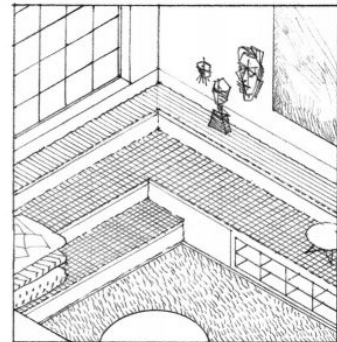
- Appropriate scale to space function
- Visual grouping: unity with variety
- Figure-ground reading
- Three-dimensional composition: rhythm, harmony, balance
- Appropriate orientation toward light, view, or an internal focus
- Shape, color, texture, and pattern



Grouping and orientation



Objects in space or merging with space



INTERIOR DESIGN ILLUSTRATED - DK CHING

1. REFER HANDOUTS AND COMPLETE THE DATA COLLECTION AND ORGANIZATION
2. ZONING LAYOUT OPTIONS AS PER DATA COLLECTED

INTERIOR DESIGN ILLUSTRATED (FRANCIS DK CHING)

THE INTERIOR DESIGN REFERENCE +
SPECIFICATION BOOK (ROCKPORT PUBLISHERS)

COLOR, SPACE, AND STYLE (ROCKPORT PUBLISHERS)

FURNITECTURE: FURNITURE THAT TRANSFORMS SPACE (ANNA YUDINA)

INSIDE PREFAB: THE READYMADE INTERIOR (DEBORAH SCHNEIDERMAN)

INTERIORS AND COLOR BOOK (FRANCESC ZAMORA MOLA)

SPACE PLANNING FOR COMMERCIAL AND RESIDENTIAL INTERIORS (SAM KUBBA)